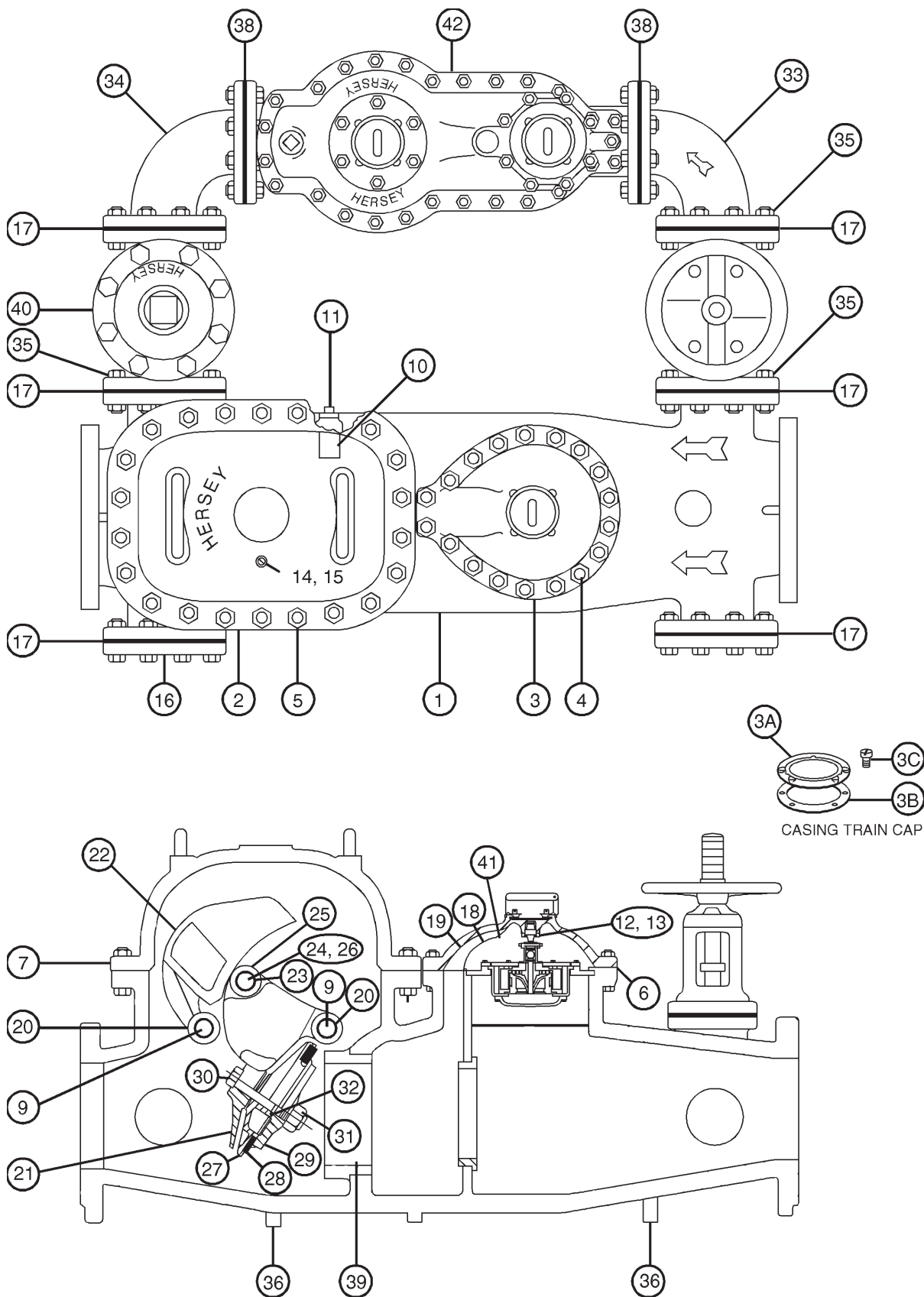


Hersey® Meters Model MFM II™ Parts

Fire Line and Master Detector Meters
 Sizes 3", 4", 6", 8", 10", 12"



Model MFM II

*Performance curves are typical only and not a guarantee of performance.

Model MFM II™ Parts

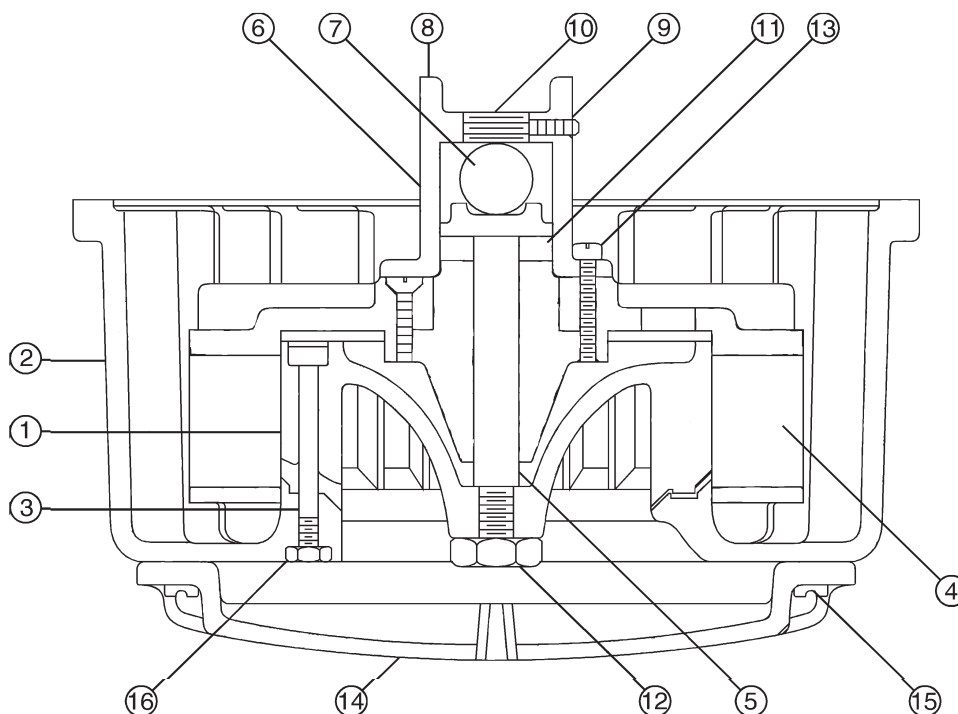


Fire Line and Master Detector Meters Sizes 3", 4", 6", 8", 10", 12"

Ref. No.	Description	4" Model	6" Model	8" Model	10" Model	12" Model
1	Bottom Case Assembly Epoxy	55715	56515	57515	58515	58915
2	Dome Epoxy	55760	56560	57560	58560	58560
3	Mainline Top Case Train Cap Train Cap Gasket Train Cap Screw	55785 - - -	56585 - - -	57585 - - -	58554 59069 59046 90166 (6)	58554 59069 59046 90166 (6)
4	Mainline Bolt	90189 (10) 90180 (2)	90129 (14)	90131 (18)	90130 (16)	90130 (16)
4	Mainline Nut	90159 (10)	90159 (14)	90219 (18)	90219 (16)	90219 (16)
5	Dome Bolt Dome Nut	90135 (12) 90251 (12)	90135 (16) 90251 (16)	90342 (22) 90301 (22)	90347 (28) 90301 (28)	90347 (28) 90301 (28)
6	Mainline Top Case Gasket	55756	56556	57556	58559	58559
7	Dome Ring Gasket	55727	56527	57427	58427	58427
9	Weight & Swing Arm Hinge Pin	55379 (2)	56379 (2)	57379 (2)	58379 (2)	58379 (2)
10	Hinge Pin Bushing	55707 (4)	56507 (4)	57307 (4)	58307 (4)	58307 (4)
11	Pipe Plug, taped	59006 (4)	59007 (4)	59008 (4)	59009 (4)	59009 (4)
12	MCT II Lower Magnetic Drive Assembly	33170	33170	33170	33170	33170
13	Magnetic Lower Drive Retaining Ring	50139	50139	50139	50139	50139
14	Vent Screw	59003 (2)	59003 (2)	59003 (2)	59003 (2)	59003 (2)
15	Nylon Vent Screw Washer	59073 (4)	59073 (4)	59073 (4)	59073 (4)	59073 (4)
16	Blank Flange Epoxy	59063 (2)	59064 (2)	59065 (2)	59066 (2)	59066 (2)
17	Flange Ring Gasket	59051 (6)	59052 (8)	59053 (8)	59054 (8)	59054 (8)
18	Torrent Adapter Ring	-	56511	56511	-	-
19	Torrent Adapter	-	56512	57512	-	-
20	Weight and Swing Arm Bushing	55325 (4)	56325 (4)	57325 (4)	58325 (4)	58325 (4)
21	Swing Arm	55313	56313	57313	58313	58313
22	Weight, full (MCT II or MVR as bypass)	55327	56327	57328	58328	58328
23	Swing Arm Roller Assembly	55362	56362	57362	58362	58362
24	Swing Arm Roll Pin	55345	56384	57384	58384	58384
25	Swing Arm Roll Pin Washer	55323 (2)	56323 (2)	57323 (2)	58323 (2)	58323 (2)
26	Swing Arm Roll Pin Clip	55326 (2)	56383 (2)	57383	58383 (2)	58383 (2)
27	Clapper	55365	56315	57315	58315	58315
28	Clapper Rubber	55366	56316	57316	58316	58316
29	Clapper Disc	55367	56317	57317	58317	58317
30	Clapper Bolt	55318	56318	57318	58318	58318
31	Clapper Bolt Stop Nut Cotter Pin *	59147 54320	59148 56320	59149 57320	59150 58320	59150 58320
32	O-Ring	55396	56396	57396	58396	58396
33	Inlet Elbow Epoxy	54558	56558	57558	58571	58571
34	Outlet Elbow Epoxy	54549	56549	57549	58549	58549
35	Bypass Flange Bolt	90135 (8) 90132 (16)	90133 (28)	90135 (59) **	90139 (68)	90139 (68)
35	Bypass Flange Nut	90251 (24)	90251 (28)	90251 (65)	90301 (68)	90301 (68)
36	Bypass Support Support Bolt (not shown) Support Nut (not shown)	55746 (2) 90132 (4) 90251 (4)	56546 (2) 90136 (4) 90251 (4)	57546 (2) 90136 (4) 90251 (4)	58558 (2) 90347 (4) 90301 (4)	58558 (2) 90347 (4) 90301 (4)
37	OS&Y Gate Valve	96206	96217	96218	96219	96219
38	Flange Gasket	95123 (2)	59052 (8)	59053 (8)	59054 (8)	59054 (8)
39	Seat Ring	55769	56368	57369	58369	58369
40	Check Valve Assembly Epoxy ***	54590E	56590E	57590E	58593	58593
41	Torrent Interior with Strainer ****	44676	44676	44676	44782	44782
42	Bypass Meter-MCTII or MVR	Refer to MCTII or MVR Parts List		-	-	-

Model MFM II

Torrent Interior with Strainer

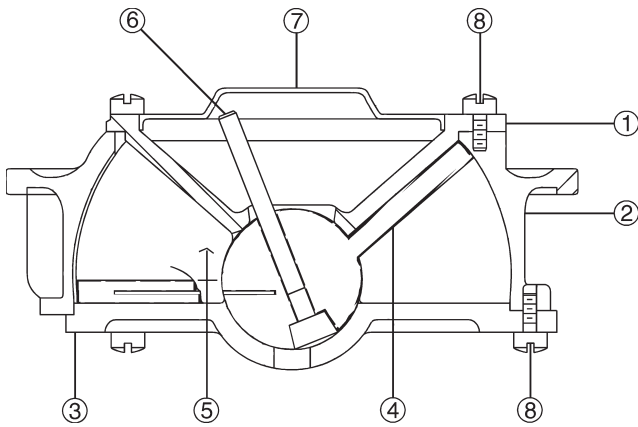


Ref. No.	Description	4" Model	6" Model	8" Model	10" & 12" Model
	Torrent Interior with Strainer	44676	44676	44676	44782
	Torrent Spindle Assembly	44681	44681	44681	44793
1	Torrent Deflector	44672	44672	44672	44797
2	Torrent Receptor	44673	44673	44673	44798
3	Deflector/Receptor Assembly Screw	98379 (3)	98379 (3)	98379 (3)	98441 (3)
4	Torrent Wheel and Bushing Assembly	44663	44663	44663	44715
	Torrent Wheel	44669	44669	44669	44769
	Wheel Bushing	44634	44634	44634	44734
	Bushing Screw	A5729 (4)	A5729 (4)	A5729 (4)	A5730 (4)
5	Torrent Spindle	44667	44667	44667	44767
6	Torrent Spindle Head	44668	44668	44668	44770
7	Torrent Bearing Ball	44626	44626	44626	44726
8	Torrent Spindle Cap	44675	44675	44675	44754
9	Set Screw	99920	99920	99920	99921
10	Torrent Interior Adjusting Screw	44658	44658	44658	44758
11	Torrent Thrust Washer	44632	44632	44632	44732
12	Torrent Check Nut	98033	98033	98033	44756
13	Cap Screw	98177 (4)	98177 (4)	98177 (4)	98179 (4)
14	Torrent Strainer	44674	44674	44674	44774
15	Strainer Attachment Screws	98394 (2)	98394 (2)	98394 (2)	98395 (2)
16	Deflector/Receptor Assembly Nut	98032 (3)	98032 (3)	98032 (3)	98032 (3)

Note: If more than one part is required per assembly, quantity is noted after part number (in parenthesis)

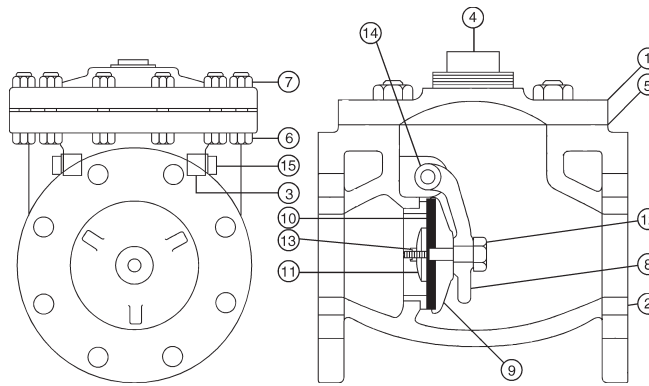
Fire Line and Master Detector Meters
Size 3"

3" MFM Disc Interior



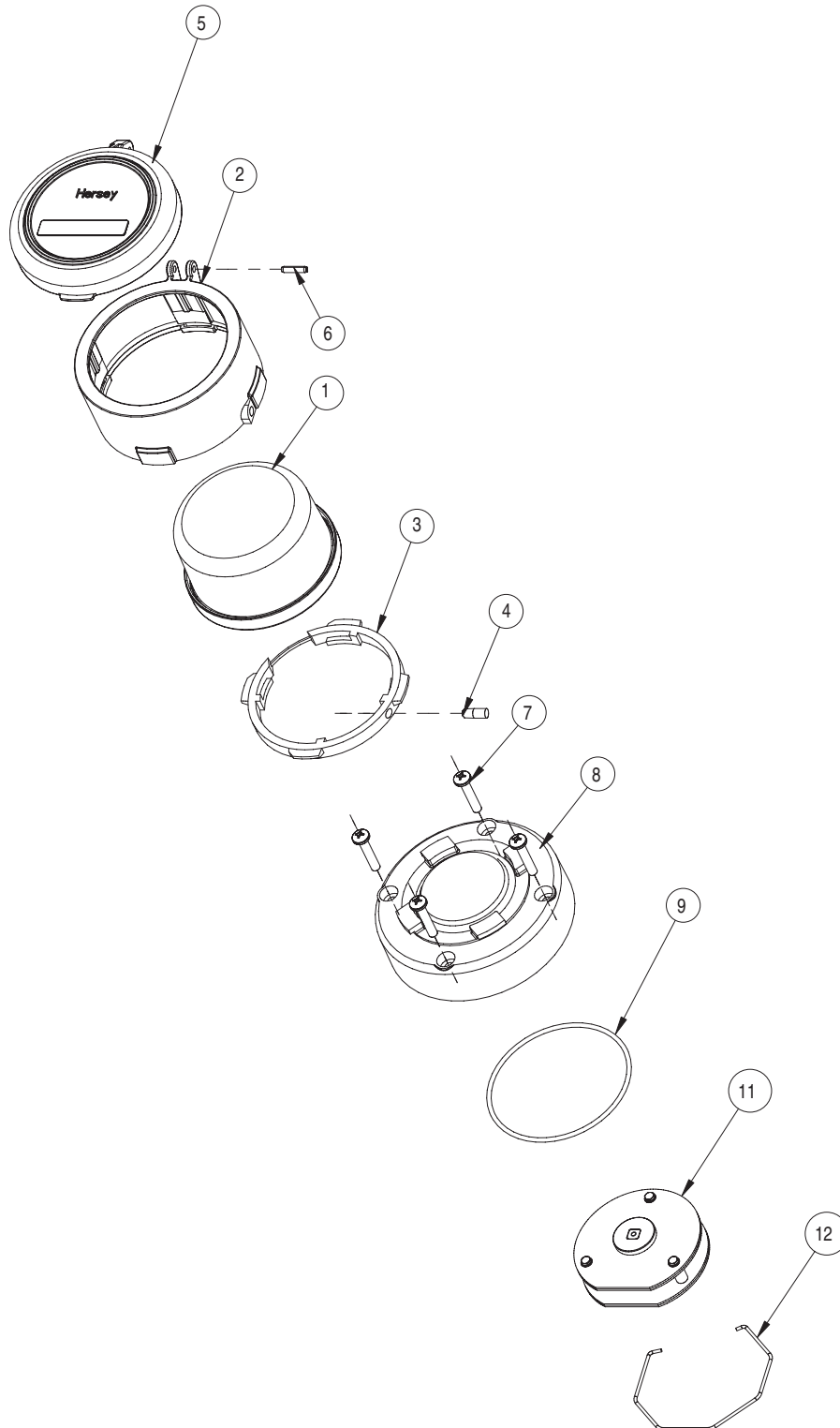
Ref. No.	Description	3" Model
	Disc Interior Complete	41405
1	Top Plate	41209
2	Chamber Ring	41402
3	Bottom Plate	41205
4	Piston	41209
5	Diaphragm	41223
6	Piston Spindle	49032
7	Sandplate	41406
8	Screw	98394 (6)

Note: If more than one part is required per assembly, quantity is noted after part number (in parenthesis).



Ref. No.	Description	4" Model 2" CV	6" Model 3" CV	8" Model 4" CV	10" Model 6" CV	12" Model 6" CV
	Check Valve Assembly - Epoxy Coated	54590E	56590E	57590E	58593	58593
1	Cover - Epoxy Coated	54540	56540	57540	58540	58540
2	Bottom Case - Epoxy Coated	54550	56550	57550	58550	58550
3	Hinge Pin Bushing	54538 (2)	54507 (2)	55707 (2)	56507 (2)	56507 (2)
4	Hollow Plug - Bronze Plug	59010	59010	5907A	5907A	5907A
5	Case Gasket	54563	56563	57563	58563	58563
6	Hex HD Bolt	90127 (4)	90129 (6)	90131 (8)	90135 (12)	90135 (12)
7	Nut	90151 (4)	90151 (6)	90212 (8)	90251 (12)	90251 (12)
8	Swing Arm	54534	56534	57534	58534	58534
9	Clapper	53815	54365	55365	56315	56315
10	Clapper Rubber	53816	54366	55366	56316	56316
11	Clapper Disc	53817	54367	55367	56317	56317
12	Clapper Bolt	53818	54318	55318	56318	56318
13	Lock Nut	59145	59146	59147	59148	59148
14	Hinge Pin	54552	56569	57552	58575	58575
15	Square HD Pipe Plug	59005 (2)	59011 (2)	59006 (2)	59007 (2)	59007 (2)

*Note: If more than one part is required per assembly, quantity is noted after part number (in parentheses).



Visual Register Options for MFII

Please refer to the drawing on page 6.11

Ref	Description	4" MFII Mainline	2" MCTII Mainline	2" MCTII Bypass	2" MVR Bypass	2" Horizon Bypass
1	Visual Register Gallons Cubic Feet	D353217 D353317	D353214 D353314	D353211 D353311	See MVR Section pg. 4.1	See Horizon Section pg. 3.1
2	Register Housing Base (Bronze)	C5772	C5772	C5772	See pg. 4.1	See pg. 3.1
2	Register Housing Base (Plastic)	C5769	C5769	C5769	See pg. 4.1	See pg. 3.1
3	Register Housing Insert	C5770	C5770	C5770	See pg. 4.1	See pg. 3.1
4	Register Locking Pin (Bronze Plastic)	A126581	A126581	A126581	See pg. 4.1	See pg. 3.1
4	Register Locking Pin (Blue Color Plastic)	A12558	A12558	A12558	See pg. 4.1	See pg. 3.1
5	Lid (Bronze)	C5774	C5774	C5774	See pg. 4.1	See pg. 3.1
5	Lid (Plastic)	C5768	C5768	C5768	See pg. 4.1	See pg. 3.1
6	Roll Pin	AS41122	AS41122	AS41122	AS41122	AS41122
7	Calibrator Mounting Screws (4)	A13014	A13014	A13014	A13014	A13014
8	Calibrator Housing	C6523	C6523	C6523	C6523	C6523
9	Calibrator O-ring	19210	19210	19210	19210	19210
10	Calibrator Holding Ring	19106	19106	19106	19106	19106
11	Calibrator Gear Train	C6534XX***	C6534XX***	C6534XX***	C6534XX***	C6534XX***
12	Calibrator Housing Kit (includes 7-10)	B7860	B7860	B7860	B7860	B7860

Ref	Description	6" MFII	3" MCTII	3" MCTII	3" MVR	3" Horizon
1	Visual Register Gallons Cubic Feet	D35327 D35337	D35325 D35335	D35328 D35338	See MVR Section pg. 4.1	See Horizon Section pg. 3.1
2	Register Housing Base (Bronze)	C5772	C5772	C5772	See pg. 4.1	See pg. 3.1
2	Register Housing Base (Plastic)	C5769	C5769	C5769	See pg. 4.1	See pg. 3.1
3	Register Housing Insert	C5770	C5770	C5770	See pg. 4.1	See pg. 3.1
4	Register Locking Pin (Bronze Plastic)	A126581	A126581	A126581	See pg. 4.1	See pg. 3.1
4	Register Locking Pin (Blue Color Plastic)	A12558	A12558	A12558	See pg. 4.1	See pg. 3.1
5	Lid (Bronze)	C5774	C5774	C5774	See pg. 4.1	See pg. 3.1
5	Lid (Plastic)	C5768	C5768	C5768	See pg. 4.1	See pg. 3.1
6	Roll Pin	AS41122	AS41122	AS41122	See pg. 4.1	See pg. 3.1
7	Calibrator Mounting Screws (4)	A13014	A13014	A13014	See pg. 4.1	See pg. 3.1
8	Calibrator Housing	C6523	C6523	C6523	See pg. 4.1	See pg. 3.1
9	Calibrator O-ring	19210	19210	19210	See pg. 4.1	See pg. 3.1
10	Calibrator Holding Ring	19106	19106	19106	See pg. 4.1	See pg. 3.1
11	Calibrator Gear Train	C6534XX***	C6534XX***	C6534XX***	See pg. 4.1	See pg. 3.1
12	Calibrator Housing Kit (includes 7-10)	B7860	B7860	B7860	See pg. 4.1	See pg. 3.1

Please refer to the drawing on page 6.11

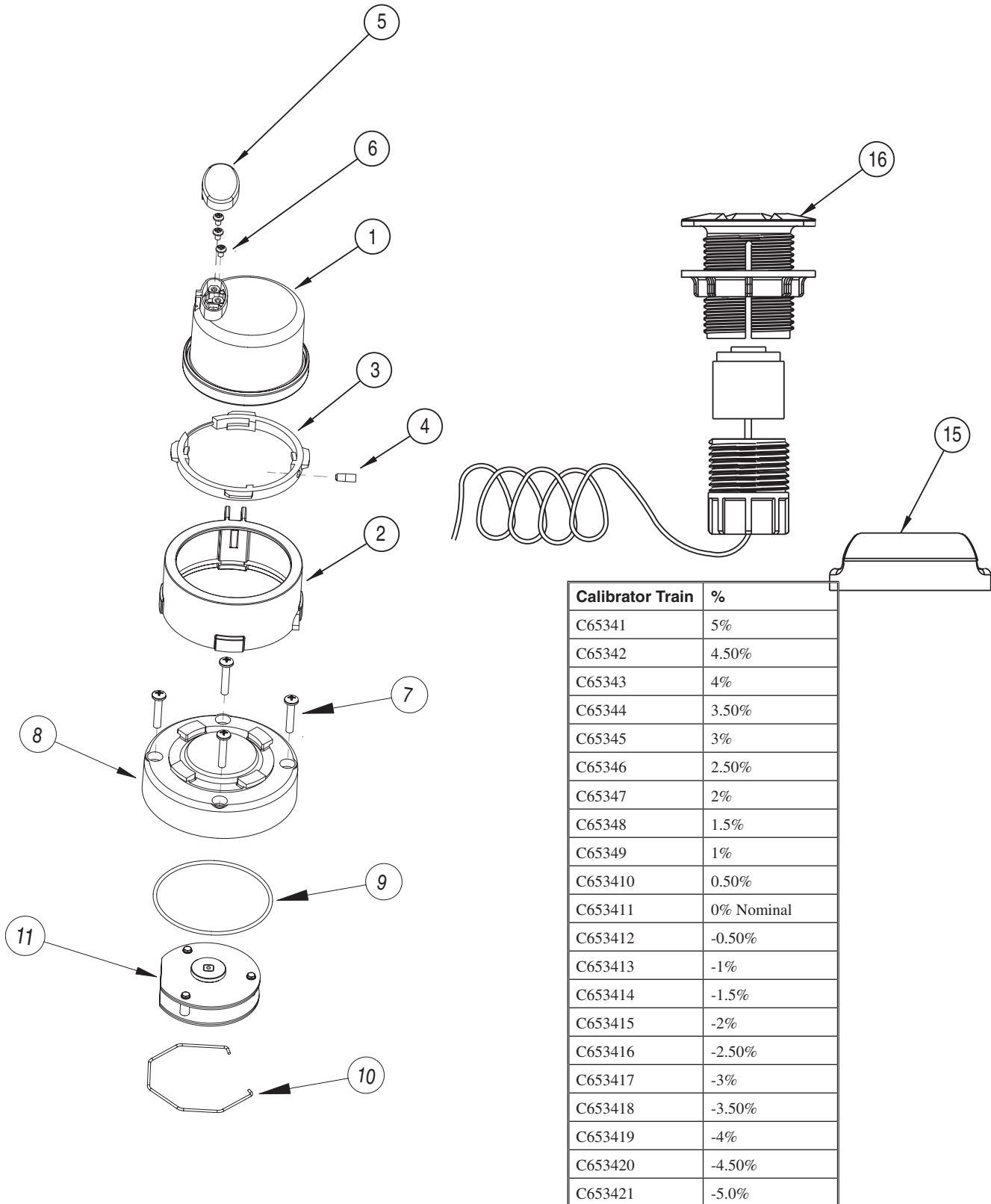
Ref	Description	8" MFII Mainline	4" MCTII Mainline	4" MCTII Bypass	4" MVR Bypass	4" Horizon Bypass
1	Visual Register					
	Gallons	D35324	D353219	D35323	See MVR	See Horizon
	Cubic Feet	D35334	D353319	D35333	Section pg. 4.1	Section pg. 3.1
2	Register Housing Base (Bronze)	C5772	C5772	C5772	See pg. 4.1	See pg. 3.1
2	Register Housing Base (Plastic)	C5769	A126581	A126581	See pg. 4.1	See pg. 3.1
3	Register Housing Insert	C5770	C5770	C5770	See pg. 4.1	See pg. 3.1
4	Register Locking Pin (Bronze Plastic)	A126581	A126581	A126581	See pg. 4.1	See pg. 3.1
4	Register Locking Pin (Blue Color Plastic)	A12558	A12558	A12558	See pg. 4.1	See pg. 3.1
5	Lid (Bronze)	C5774	C5774	C5774	See pg. 4.1	See pg. 3.1
5	Lid (Plastic)	C5768	C5768	C5768	See pg. 4.1	See pg. 3.1
6	Roll Pin	AS41122	AS41122	AS41122	See pg. 4.1	See pg. 3.1
7	Calibrator Mounting Screws (4)	A13014	A13014	A13014	See pg. 4.1	See pg. 3.1
8	Calibrator Housing	C6523	C6523	C6523	See pg. 4.1	See pg. 3.1
9	Calibrator O-ring	19210	19210	19210	See pg. 4.1	See pg. 3.1
10	Calibrator Holding Ring	19106	19106	19106	See pg. 4.1	See pg. 3.1
11	Calibrator Gear Train	C6534XX***	C6534XX***	C6534XX***	See pg. 4.1	See pg. 3.1
12	Calibrator Housing Kit (includes 7-10)	B7860	B7860	B7860	See pg. 4.1	See pg. 3.1

Ref	Description	10" MFII Mainline	12" MFII Mainline	6" MCTII Mainline	6" MCTII Bypass	6" MVR Bypass	6" Horizon Bypass
1	Visual Register						
	Gallons	D35321	D35321	D353210	D353218	See MVR	See Horizon
	Cubic Feet	D35331	D35331	D353310	D353318	Section pg. 4.1	Section pg. 3.1
2	Register Housing Base (Bronze)	C5772	C5772	C5772	C5772	See pg. 4.1	See pg. 3.1
2	Register Housing Base (Plastic)	C5769	C5769	C5769	C5769	See pg. 4.1	See pg. 3.1
3	Register Housing Insert	C5770	C5770	C5770	C5770	See pg. 4.1	See pg. 3.1
4	Register Locking Pin (Bronze Plastic)	A126581	A126581	A126581	A126581	See pg. 4.1	See pg. 3.1
4	Register Locking Pin (Blue Color Plastic)	A12558	A12558	A12558	A12558	See pg. 4.1	See pg. 3.1
5	Lid (Bronze)	C5774	C5774	C5774	C5774	See pg. 4.1	See pg. 3.1
5	Lid (Plastic)	C5768	C5768	C5768	C5768	See pg. 4.1	See pg. 3.1
6	Roll Pin	AS41122	AS41122	AS41122	AS41122	See pg. 4.1	See pg. 3.1
7	Calibrator Mounting Screws (4)	A13014	A13014	A13014	A13014	See pg. 4.1	See pg. 3.1
8	Calibrator Housing	C6523	C6523	C6523	C6523	See pg. 4.1	See pg. 3.1
9	Calibrator O-ring	19210	19210	19210	19210	See pg. 4.1	See pg. 3.1
10	Calibrator Holding Ring	19106	19106	19106	19106	See pg. 4.1	See pg. 3.1
11	Calibrator Gear Train	C6534XX***	C6534XX***	C6534XX***	C6534XX***	See pg. 4.1	See pg. 3.1
12	Calibrator Housing Kit (includes 7-10)	B7860	B7860	B7860	B7860	See pg. 4.1	See pg. 3.1

***Call Hersey Customer Service for the appropriate Calibrator Gear Train.

Translator Encoder Register and Calibrator

MFMI



Calibrator Train	%
C65341	5%
C65342	4.50%
C65343	4%
C65344	3.50%
C65345	3%
C65346	2.50%
C65347	2%
C65348	1.5%
C65349	1%
C653410	0.50%
C653411	0% Nominal
C653412	-0.50%
C653413	-1%
C653414	-1.5%
C653415	-2%
C653416	-2.50%
C653417	-3%
C653418	-3.50%
C653419	-4%
C653420	-4.50%
C653421	-5.0%

Translator Encoder Regis-

Translator Register Options for MFMI

Please refer to the drawing on page 6.14

Ref	Description	4" MFMI Mainline	2" MCTII Mainline	2" MCTII Bypass	2" MVR Bypass	2" Horizon Bypass
1	Translator Register Gallons* Cubic Feet*	D353417xxx D353517xxx	D353414xxx D353514xxx	D353411xxx D353511xxx	See MVR Section	See Horizon Section
2	Register Housing Base (Plastic)	C5769	C5769	C5769	See pg. 4.1	See pg. 3.1
3	Register Housing Insert	C5770	C5770	C5770	See pg. 4.1	See pg. 3.1
4	Register Locking Pin (Bronze Plastic)	A126581	A126581	A126581	See pg. 4.1	See pg. 3.1
4	Register Locking Pin (Blue Color Plastic)	A12658	A12658	A12658	See pg. 4.1	See pg. 3.1
5	Lens Terminal Cover	B8447	B8447	B8447	See pg. 4.1	See pg. 3.1
6	Terminal Lug Screw	98197 (3)	98197 (3)	98197 (3)	See pg. 4.1	See pg. 3.1
7	Calibrator Mounting Screws	A13014	A13014	A13014	See pg. 4.1	See pg. 3.1
8	Calibrator Housing	C6523	C6523	C6523	See pg. 4.1	See pg. 3.1
9	Calibrator O-ring	19210	19210	19210	See pg. 4.1	See pg. 3.1
10	Calibrator Holding Ring	19106	19106	19106	See pg. 4.1	See pg. 3.1
11	Calibrator Gear Train	C6534XX*	C6534XX*	C6534XX*	See pg. 4.1	See pg. 3.1
12	Calibrator Housing Kit (includes 7-10)	B7860	B7860	B7860	See pg. 4.1	See pg. 3.1
13	TrueRead (not shown)	C6551G	C6551G	C6551G	See pg. 4.1	See pg. 3.1
14	1,000' Spool of Wire	AS755	AS755	AS755	See pg. 4.1	See pg. 3.1
15	Wall Pad	T1234	T1234	T1234	See pg. 4.1	See pg. 3.1
16	Pit Pad with 3' of wire	T1235	T1235	T1235	See pg. 4.1	See pg. 3.1

Ref	Description	6" MFMI Mainline	3" MCTII Mainline	3" MCTII Bypass	3" MVR Bypass	3" Horizon Bypass
1	Translator Register Gallons* Cubic Feet*	D353407xxx D353507xxx	D353405xxx D353505xxx	D353408xxx D353508xxx	See MVR Section	See Horizon Section
2	Register Housing Base (Plastic)	C5769	C5769	C5769	See pg. 4.1	See pg. 3.1
3	Register Housing Insert	C5770	C5770	C5770	See pg. 4.1	See pg. 3.1
4	Register Locking Pin (Bronze Plastic)	A126581	A126581	A126581	See pg. 4.1	See pg. 3.1
4	Register Locking Pin (Blue Color Plastic)	A12658	A12658	A12658	See pg. 4.1	See pg. 3.1
5	Lens Terminal Cover	B8447	B8447	B8447	See pg. 4.1	See pg. 3.1
6	Terminal Lug Screw	98197 (3)	98197 (3)	98197 (3)	See pg. 4.1	See pg. 3.1
7	Calibrator Mounting Screws	A13014	A13014	A13014	See pg. 4.1	See pg. 3.1
8	Calibrator Housing	C6523	C6523	C6523	See pg. 4.1	See pg. 3.1
9	Calibrator O-ring	19210	19210	19210	See pg. 4.1	See pg. 3.1
10	Calibrator Holding Ring	19106	19106	19106	See pg. 4.1	See pg. 3.1
11	Calibrator Gear Train	C6534XX*	C6534XX*	C6534XX*	See pg. 4.1	See pg. 3.1
12	Calibrator Housing Kit (includes 7-10)	B7860	B7860	B7860	See pg. 4.1	See pg. 3.1
13	TrueRead (not shown)	C6551G	C6551G	C6551G	See pg. 4.1	See pg. 3.1
14	1,000' Spool of Wire	AS755	AS755	AS755	See pg. 4.1	See pg. 3.1
15	Wall Pad	T1234	T1234	T1234	See pg. 4.1	See pg. 3.1
16	Pit Pad with 3' of wire	T1235	T1235	T1235	See pg. 4.1	See pg. 3.1

Translator Register Options for MFMI

Please refer to the drawing on page 6.14

Ref	Description	8" MFMI Mainline	4" MCTII Mainline	4" MCTII Bypass	4" MVR Bypass	4" Horizon Bypass
1	Translator Register Gallons* Cubic Feet*	D353404xxx D353504xxx	D353419xxx D353519xxx	D353403xxx D353503xxx	See MVR Section	See Horizon Section
2	Register Housing Base (Plastic)	C5769	C5769	C5769	See pg. 4.1	See pg. 3.1
3	Register Housing Insert	C5770	C5770	C5770	See pg. 4.1	See pg. 3.1
4	Register Locking Pin (Bronze Plastic)	A126581	A126581	A126581	See pg. 4.1	See pg. 3.1
4	Register Locking Pin (Blue Color Plastic)	A12658	A12658	A12658	See pg. 4.1	See pg. 3.1
5	Lens Terminal Cover	B8447	B8447	B8447	See pg. 4.1	See pg. 3.1
6	Terminal Lug Screw	S98197 (3)	98197 (3)	98197 (3)	See pg. 4.1	See pg. 3.1
8	Calibrator Housing	C6523	C6523	C6523	See pg. 4.1	See pg. 3.1
9	Calibrator O-ring	19210	19210	19210	See pg. 4.1	See pg. 3.1
10	Calibrator Holding Ring	19106	19106	19106	See pg. 4.1	See pg. 3.1
11	Calibrator Gear Train	C6534XX*	C6534XX*	C6534XX*	See pg. 4.1	See pg. 3.1
12	Calibrator Housing Kit (includes 7-10)	B7860	B7860	B7860	See pg. 4.1	See pg. 3.1
13	TrueRead (not shown)	C6551G	C6551G	C6551G	See pg. 4.1	See pg. 3.1
14	1,000' Spool of Wire	AS755	AS755	AS755	See pg. 4.1	See pg. 3.1
15	Wall Pad	T1234	T1234	T1234	See pg. 4.1	See pg. 3.1
16	Pit Pad with 3' of wire	T1235	T1235	T1235	See pg. 4.1	See pg. 3.1

Ref	Description	10" MFMI Mainline	12" MFMI Mainline	6" MCTII Mainline	6" MCTII Bypass	6" MVR Bypass	6" Horizon Bypass
1	Translator Register - 25' wire only Gallons Cubic Feet	D353401xxx D353501xxx	D353401xxx D353501xxx	D353410xxx D353510xxx	D353418xxx D353518xxx	See MVR Section	See Horizon Section
2	Register Housing Base (Plastic)	C5769	C5769	C5769	C5769	See pg. 4.1	See pg. 3.1
3	Register Housing Insert	C5770	C5770	C5770	C5770	See pg. 4.1	See pg. 3.1
4	Register Locking Pin (Bronze Plastic)	A126581	A126581	A126581	A126581	See pg. 4.1	See pg. 3.1
4	Register Locking Pin (Blue Color Plastic)	A12658	A12658	A12658	A12658	See pg. 4.1	See pg. 3.1
5	Lens Terminal Cover	B8447	B8447	B8447	B8447	See pg. 4.1	See pg. 3.1
6	Terminal Lug Screw	98197 (3)	98197 (3)	98197 (3)	98197 (3)	See pg. 4.1	See pg. 3.1
7	Calibrator Mounting Screws	A13014	A13014	A13014	A13014	See pg. 4.1	See pg. 3.1
8	Calibrator Housing	C6523	C6523	C6523	C6523	See pg. 4.1	See pg. 3.1
9	Calibrator O-ring	19210	19210	19210	19210	See pg. 4.1	See pg. 3.1
10	Calibrator Holding Ring	19106	19106	19106	19106	See pg. 4.1	See pg. 3.1
11	Calibrator Gear Train	C6534XX*	C6534XX*	C6534XX*	C6534XX*	See pg. 4.1	See pg. 3.1
12	Calibrator Housing Kit (includes 7-10)	B7860	B7860	B7860	B7860	See pg. 4.1	See pg. 3.1
13	TrueRead (not shown)	C6551G	C6551G	C6551G	C6551G	See pg. 4.1	See pg. 3.1
14	1,000' Spool of Wire	AS755	AS755	AS755	AS755	See pg. 4.1	See pg. 3.1
15	Wall Pad	T1234	T1234	T1234	T1234	See pg. 4.1	See pg. 3.1
16	Pit Pad with 3' of wire	T1235	T1235	T1235	T1235	See pg. 4.1	See pg. 3.1

Translator Encoder Register

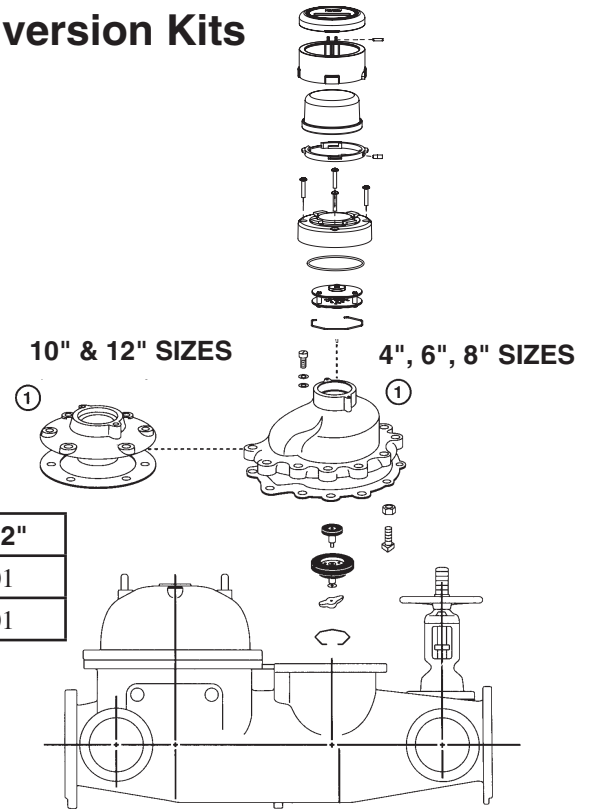
Hersey® Meters Model MFM II™ Parts

Fire Line and Master Detector Meters
Size 4", 6", 8", 10", 12"

Mainline Standard Conversion Kits

Parts supplied in a Hersey Fireline Conversion Kit:

1. New complete top case with gasket, nuts and bolts.
2. New sealed registers.
3. New register bayonet style housing with locking pin.
4. New calibrator gear train and housing.



Description	4"	6"	8"	10" & 12"
U.S. Gallon	PCS0201	PCT0201	PCU0201	PCV0201
Cubic Foot	PCS0101	PCT0101	PCU0101	PCV0101

*Part numbers listed are for standard read registers.
Contact customer service for optional AMR registers.

Mainline Weights Necessary for Converting to Different Bypass meters

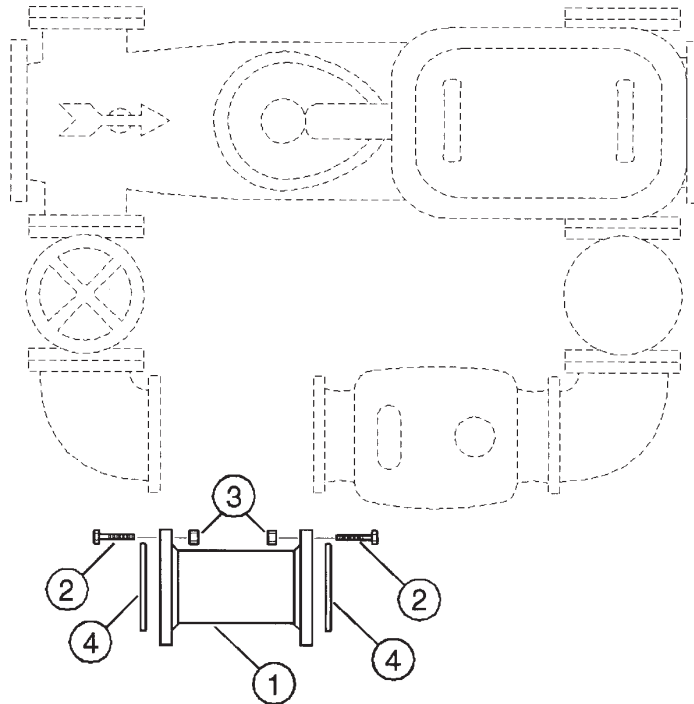
Original Bypass Meter	Conversion to	Part Number
CT/MCT - 2" - 6"	MCTII	No Need to Change Weight
CT/MCT/MCTII	MVR	No Need to Change Weight
CT/MCT/MCTII - 2"	HORIZON - 2"	55328
CT/MCT/MCTII - 3"	HORIZON - 3"	56328
CT/MCT/MCTII - 4"	HORIZON - 4"	57327
CT/MCT/MCTII - 6"	HORIZON - 6"	58327
MHR OR HORIZON - 2"	MCTII - 2"	55731
MHR OR HORIZON - 3"	MCTII - 3"	56327
MHR OR HORIZON - 4"	MCTII - 4"	57328
MHR OR HORIZON - 6"	MCTII - 6"	58328
MHR OR HORIZON - 2"	MVR - 2"	55731
MHR OR HORIZON - 3"	MVR - 3"	56327
MHR OR HORIZON - 4"	MVR - 4"	57328
MHR OR HORIZON - 6"	MVR - 6"	58328
MVR - 2"-6"	MCTII	No Need to Change Weight
MVR - 2"	HORIZON - 2"	55328
MVR - 3"	HORIZON - 3"	56328
MVR - 4"	HORIZON - 4"	57327
MVR - 6"	HORIZON - 6"	58327

Note: Using anything other than a genuine Hersey bypass meter may affect performance, may void approvals and test data.

Model MFM II™ Parts

Hersey® Meters

Fire Line and Master Detector Meters
Size 4", 6", 8", 10", 12"



Flanged Adapters

Ref.	Description	Part Number
1	2" Adapter * for Replacement of Compound or Disc Bypass Meter on 4" FM/MFM/MFMII	95340 (Epoxy Coated)
1	3" Adapter for Replacement of Compound or Disc Bypass Meter (with MVR) on 6" FM/MFM/MFMII	95341 (Epoxy Coated)
1	4" Adapter for Replacement of Compound or Disc Bypass Meter (with MVR) on 8" FM/MFM/MFMII	95344 (Epoxy Coated)
1	6" Adapter for Replacement of Compound or Disc Bypass Meter (with MVR) on 10", 12" FM/MFM/MFMII	95343 (Epoxy Coated)
2	Bolt for 2" Bypass Meter Connection	90136 (4) 90135 (2)
2	Bolt for 3" Bypass Meter Connection	90135 (4) 90133 (8)
2	Bolt for 4" Bypass Meter Connection	90136 (4) 90135 (20)
2	Bolt for 6" Bypass Meter Connection	90347 (4) 90139 (20)
3	Nut for 2" Bypass Meter Connection	90251 (6)
3	Nut for 3" Bypass Meter Connection	90251 (12)
3	Nut for 4" Bypass Meter Connection	90251 (24)
3	Nut for 6" Bypass Meter Connection	90301 (24)
4	Gasket for 2" Bypass Meter Connection	95123 (3)
4	Gasket for 3" Bypass Meter Connection	59052 (3)
4	Gasket for 4" Bypass Meter Connection	59053 (3)
4	Gasket for 6" Bypass Meter Connection	59054 (3)

6.18

* Not needed if replacement is 2" MVR-160 flanged meter.

Rev. 04-06

Note: If more than one part is required per assembly, quantity is noted after part number (in parentheses).