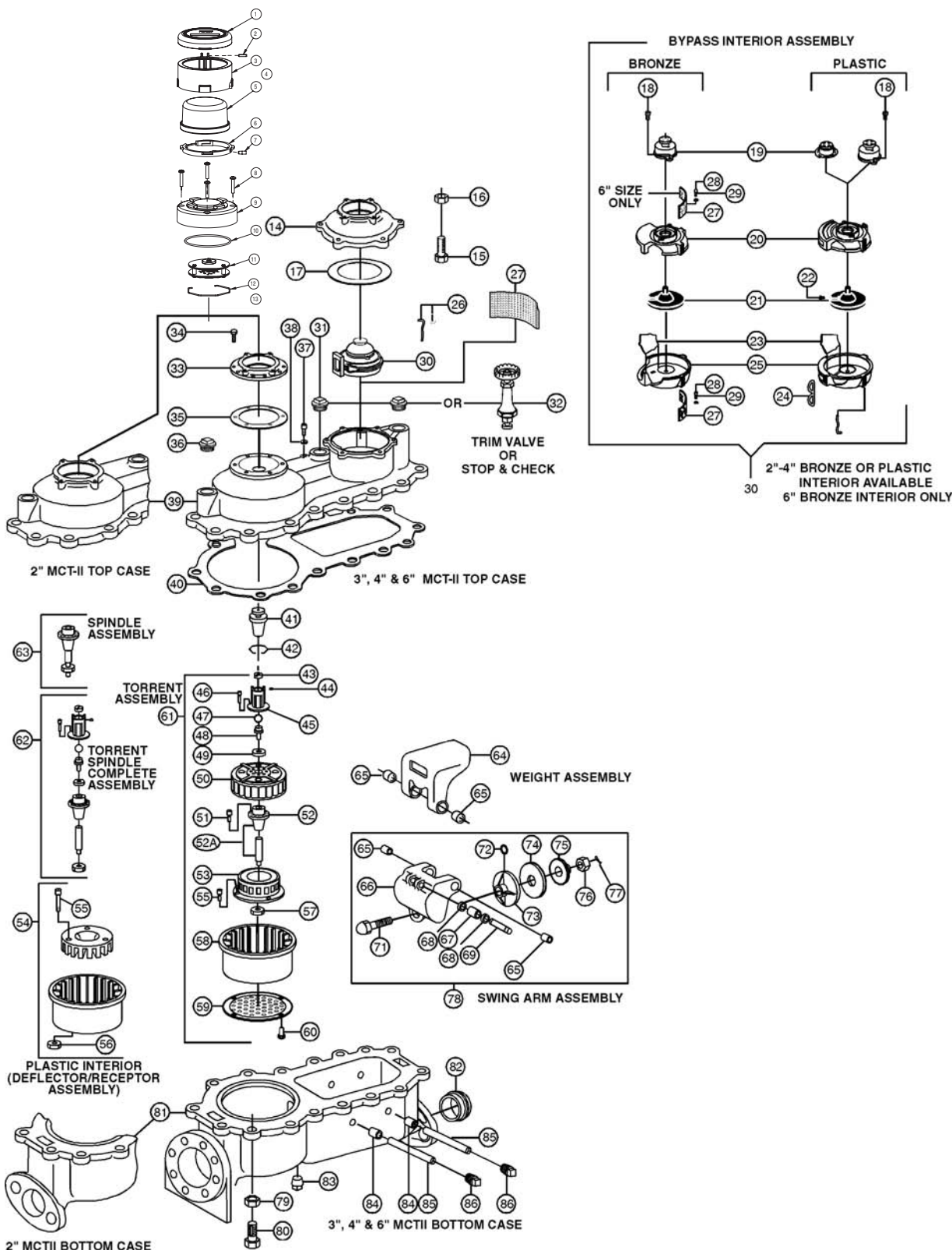


Model MCT II

Hersey® Meters

Compound Magnetic Drive Meters
Sizes 2", 3", 4" and 6"

2", 3", 4" and 6" Models



Model MCT II

Ref. No.	Description	2" Model	3" Model	4" Model	6" Model
1	Plastic Lid Bronze Lid	C5768 C5774	C5768 C5774	C5768 C5774	C5768 C5774
2	Lid Hinge Pin	AS41122	AS41122	AS41122	AS41122
3	Register Housing Base Plastic Register Housing Base Bronze	C5769 C5772	C5769 C5772	C5769 C5772	C5769 C5772
4	Register Housing Assy Plastic (Includes Part 1, 2, 3, 6, & 7) Register Housing Assy Bronze (Includes Part 1, 2, 3, 6, & 7)	B7856 B7857	B7856 B7857	B7856 B7857	B7856 B7857
5	Register	See Page 5.11-5.13	See Page 5.11-5.13	See Page 5.11-5.13	See Page 5.11-5.13
6	Register Retainer	C5770	C5770	C5770	C5770
7	Register Locking Pin Blue Register Locking Pin Bronze Color	A12558 A126581	A12558 A126581	A12558 A126581	A12558 A126581
8	Calibrator Housing Screws (4)	A13014	A13014	A13014	A13014
9	Calibrator Housing	C6523	C6523	C6523	C6523
10	Calibrator O-Ring	19210	19210	19210	19210
11	Calibrator Gear Train	C6534XX	C6534XX	C6534XX	C6534XX
12	Calibrator Holding Ring	19106	19106	19106	19106
13	Calibrator Housing Kit Includes Parts 8, 9, 10 & 12	B7860	B7860	B7860	B7860
14	Bypass Top Case	51022P219	51022P211	51022P213	51022P265
15	Bypass Bolt	90074 (4)	90074 (6)	90074 (8)	90043 (10)
16	Bypass Bolt Nut	90066 (4)	90066 (6)	90066 (8)	90044 (10)
17	Bypass Top Case Gasket	51068P147	51068P154	51068P155	51068P174
18	Magnet Housing Screw (Bronze Chamber) Magnet Housing Screw (Plastic Chamber)	13348P176 (2) -	13348P176 (2) 13348P176 (2)	13348P176 (2) 13348P176 (2)	13348P176 (2) 13348P176 (2)
19	Magnet Housing Assembly (Bronze Chamber) Magnet Housing Assembly (Plastic Chamber)	51281G047 51281G060	51281G062 51281G062	51281G063 51281G061	51281G063 -
20	Upper Chamber Half (Bronze) Upper Chamber Half (Plastic)	51034P021 51034P056	51034P029 51034P053	51034P028 51034P054	51034P058 -
21	Chamber Disc (Bronze Interior) Chamber Disc (Plastic Interior)	51210G001 51038G164	- 51038G165	51210G083 51038G166	51038G186 -
22	Thrust Roller (Plastic Interior Only)	51103P010	51103P012	51103P012	-
23	Diaphragm (Bronze Chamber) Diaphragm (Plastic Chamber)	51032P045 51032P063	51032P044 51032P064	51032P010 51032P065	51032P067 -
24	Outlet Port Seal (Plastic Interior Only)	51089P030	42710P034	42710P052	-
25	Lower Chamber Half (Bronze) Lower Chamber Half (Plastic)	51033P021 51033P056	51033P030 51033P054	51033P029 51033P055	51033P058 -
26	Chamber Holding Pin (Bronze) Chamber Holding Pin (Plastic)	50115 51287P010	51287P011 (2) 51287P011 (2)	51115 (2) 51287P011 (2)	51515 -
27	Bypass Strainer	51026P040	51026P044	51026P045	51026P046 (2)
28	Chamber Strainer Screw	-	-	-	13348P176 (4)
29	Strainer Lock Washer	-	-	-	39738P014 (4)
30	Bypass Interior Assembly (Bronze) Bypass Interior Assembly (Plastic)	51258G102 51258G362	- 51258G365	51258G277 51258G364	51258G587 -
31	Trim Valve Plug	53860 (2)	53860 (2)	55360 (2)	56360 (2)
32	Trim Valve (Option) Stop & Check Valve (Option)	53850 (2) 54385	53850 (2) 54385	55350 (2) 55385	56350 (2) 56385
33	Train Cap	-	59069	59069	59069
34	Train Cap Screw	-	90166 (6)	90166 (6)	90166 (6)
35	Train Cap Gasket	-	59046	59046	59046
36	Test Plug	59008	59010	59010	59010
37	Vent Screw	59003	59003	59003	59003
38	Vent Screw Washer	59073 (2)	59073 (2)	59073 (2)	59073 (2)
39	Top Case	53882	54382	55382	56382
40	Top Case Gasket	53846	54346	55346	56346

Model MCT II Parts

Model MCT II

Compound Magnetic Drive Meters Sizes 2", 3", 4", 6" and 8"

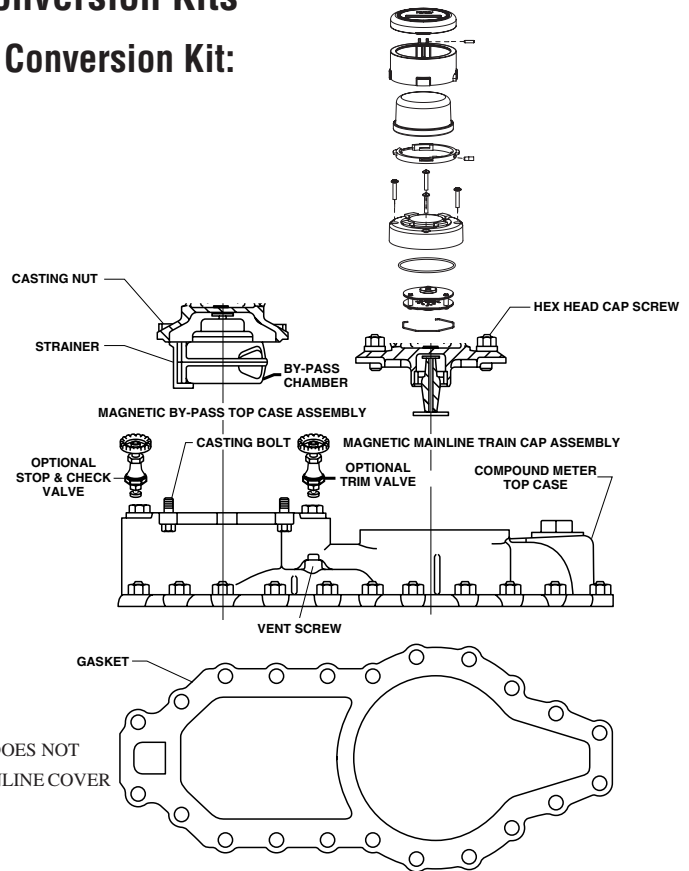
41	Lower Drive Assembly (Magnetic)	33170	33170	33170	33170
42	Lower Drive Retaining Clip	50139	50139	50139	50139
43	Torrent Cap Adjusting Screw	44658	44758	44858	44858
44	Torrent Cap Set Screw	99920	99921	99922	99923
45	Torrent Spindle Cap Assembly	44682	44750	44850	44950
46	Torrent Cap Screw	98177 (4)	98179 (4)	98191 (4)	99972 (4)
47	Torrent Spindle Ball	44626	44726	44826	44926
48	Torrent Spindle Head	44668	44770	44870	44955
49	Torrent Thrust Washer	44632	44732	44832	44932
50	Torrent Wheel	44665	44765	44865	44912
51	Torrent Bushing Screw	98178 (4)	98180 (4)	98192 (4)	99990 (4)
52	Torrent Wheel Bushing	44634	44734	44831	44931
52A	Torrent Spindle/Bushing (Replacement Kit)	-	44779	44879	44979
53	Torrent Deflector (Bronze Interior)	-	44702	44803	44903
54	Deflector/Receptor Assembly (Plastic Interior)	44683	44799	-	-
55	Deflector Screw	98379 (3)	98395 (4)	99801 (6)	99803 (8)
56	Deflector Screw Nut	98032 (3)	-	-	-
57	Spindle Check Nut	98033	44756	44856	44956
58	Torrent Receptor (Bronze Interior)	-	44702	44802	44902
59	Torrent Strainer	44674	44774	44874	44952
60	Strainer Screw	98394 (2)	98395 (3)	98395 (3)	99801 (6)
61	Torrent Complete Assembly (Bronze Interior)	-	-	44848	44948
62	Torrent Spindle Complete Assembly	44681	44793	44893	44993
63	Spindle Assembly (Replacement Kit Bronze Interior)	44679	-	-	-
64	Weight on Mainline of MCTII	53864	54384 w/Bush	55328	56327
65	Weight & Swing Arm Bushing	53825 (4)	54325 (4)	55325 (4)	56325 (4)
66	Swing Arm	53863	54313	55313	56313
67	Swing Arm Roller and Bushing	53837	54337	55362	56362
68	Swing Arm Roller Washer	53823 (2)	54323 (2)	55323 (2)	56323 (2)
69	Swing Arm Roller Pin	53839	54338	55345	56384
70	Roller Pin Clip	53874 (2)	54351 (2)	55326 (2)	56383 (2)
71	Clapper Bolt	53818	54318	55318	56318
72	Clapper Bolt O-Ring	-	54396	55396	56396
73	Clapper	53815	54365	55365	56315
74	Clapper Rubber	53816	54366	55366	56316
75	Clapper Disc	53817	54367	55367	56317
76	Clapper Bolt Nut * Stop Nut Nylon	59145	59146	59147	59148
78	Swing Arm Complete Assembly	53841	54344	55339	56335
79	Bottom Case Nut	90122 (16)	90159 (22)	90219 (26)	90336 (32)
80	Bottom Case Bolt	90117 (16)	90185 (22)	90217 (26)	90137 (32)
81	Bottom Case with Seat Ring	53805	54305	55305	56305
82	Seat Ring	53869	54369	55369	56368
83	Bottom Case Drain Plug	59006	59006	59007	59007
84	Swing Arm Hinge Spindle Bushing	53807 (4)	54307 (4)	55307 (4)	56307 (4)
85	Swing Arm Hinge Spindle	53879 (2)	54379 (2)	55379 (2)	56379 (2)
86	Swing Arm Hinge Spindle Plug	59005 (4)	59011 (4)	59006 (4)	59007 (4)

* Replaced by Nut with Nylon Insert. Note: If more than one part is required per assembly quantity is noted after part number (in parentheses).

Standard Conversion Kits

Parts supplied in a Hersey Compound Meter Conversion Kit:

1. New complete top case with gasket, nuts and bolts.
2. New sealed registers.
3. New register bayont style housing with locking pin.
4. New calibrator gear train and housing.
5. New train cap for 3" - 6" sizes
6. New bypass disc interior.



NOTE: 2" MCTII TOPCASE DOES NOT
 HAVE A REMOVABLE MAINLINE COVER

Description	2" Model	3" Model	4" Model	6" Model
Standard SG (Gallon)	ZCP0201	ZCR0201	ZCS0201	ZCT0204
Standard CF (Cubic Foot)	ZCP0101	ZCR0101	ZCS0101	ZCT0104
With Trim Valves, SG (Gallon)	ZCP0202	ZCR0202	ZCS0202	ZCT0205
With Trim Valves, CF (Cubic Foot)	ZCP0102	ZCR0102	ZCS0102	ZCT0105
With Stop and Trim Valves, SG (Gallon)	ZCP0203	ZCR0203	ZCS0203	ZCT0206
With Stop and Trim Valves, CF (Cubic Foot)	ZCP0103	ZCR0103	ZCS0103	ZCT0106

2", 3" and 4" kits have plastic bypass interiors.
 6" kits have bronze interiors.

Mainline Weights Necessary for Converting to MCT II Meters

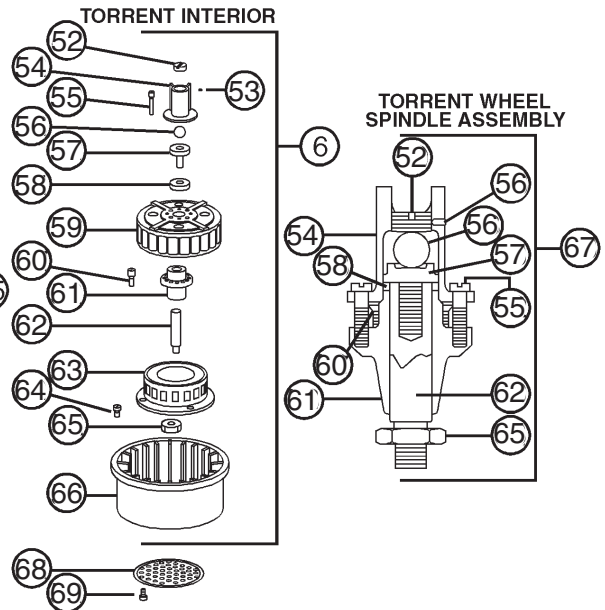
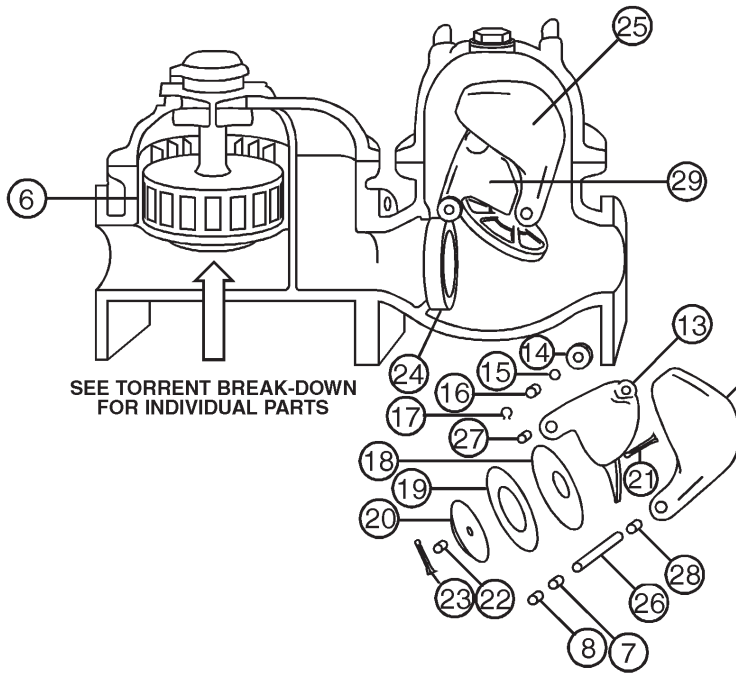
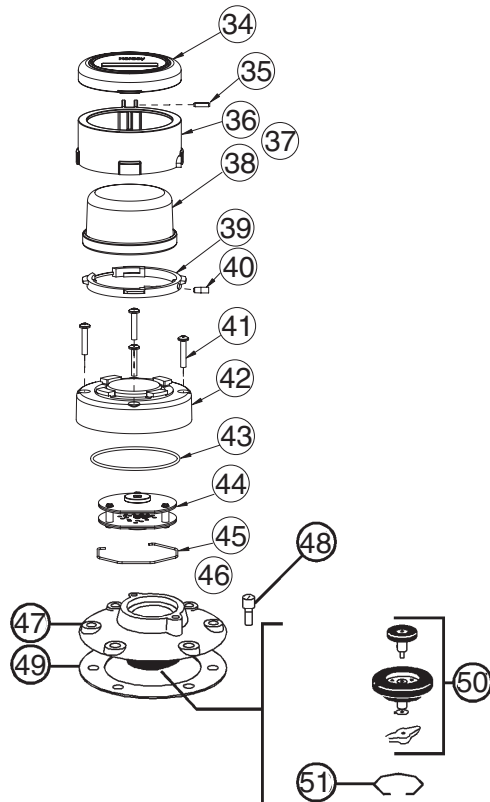
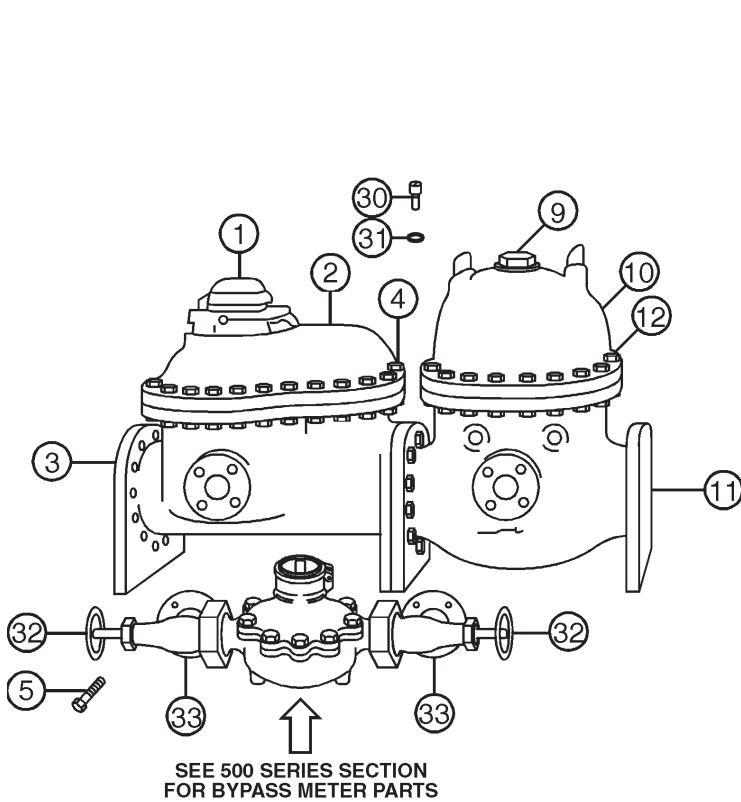
Original Meter	Conversion to	Part Number
2" CT/MCT (with full weight)	MCTII	No Need to Change Weight
3" CT/MCT (older meters with full weight and newer meters with empty weight)	MCTII	54386 (5-1/2 LB weight)
4" CT/MCT (older meters with full weight and newer meters with empty weight)	MCTII	55333
6" CT/MCT (with full weight)	MCTII	No Need to Change Weight

Model MCT II Parts

Hersey® Meters

Compound Magnetic Drive Meters
Size 8"*

8" Model MCT II Parts



Model MCT II Parts

8" Model MCT II Parts

Ref. No.	Description	8" Model MCTII
1	Register Box Assembly	B7856
2	Torrent Top Case	57104
	Torrent Case Gasket	57105
3	Torrent Bottom Case	57306
4	Torrent Top Case Bolt and Nut	90267 (25)
5	Connecting Flange Bolt and Nut Case Stud Case Stud Nut	90267 (6) 90320 (2) 90301 (2)
6	Torrent Interior	45046
7	Hinge Spindle Bushing	57307 (4)
8	Hinge Spindle Plug	59008 (4)
9	Test Plug	5907A
10	Valve Top Case	57302E
11	Valve Bottom Case	57300
	Valve Case Gasket	57427
12	Valve Case Bolt and Nut Blank Flange Cap Screw	90313 (28) 59063 (2) 90276 (16)
13	Swing Arm	57313
14	Swing Arm Roller and Bushing	57362
15	Swing Arm Roller Washer	57323 (2)
16	Swing Arm Roller Pin	57384
17	Swing Arm Roller Pin Clip	57383
18	Clapper	57315
19	Clapper Rubber	57316
20	Clapper Disc	57317
21	Clapper Bolt	57318
22	Clapper Bolt Nut *	
23	Clapper Bolt Cotter Pin *	59149
24	Seat Ring	57369
25	Weight with bushings	57332
26	Hinge Spindle	57379 (2)
27	Swing Arm Rubber Bushing	57325 (2)
28	Weight Bushing	57325 (2)
29	Swing Arm Complete	57326
30	Vent Screw	59003
31	Vent Screw Washer Clapper Bolt O-Ring	59073 (2) 57396
32	Valve Trimming Angle Valve Gasket (4 bolt) 2" Flange Gasket (2 bolt) 2" - 2 Bolt Flange Bolt and Nut	57350 (2) 59051 (4) 95123 (2) 90276 (4)
33	Angle Valve Body	57351 (2)
34	Plastic Lid Bronze Lid	C5768 C5774

Ref. No.	Description	8" Model MCT
35	Lid Hinge Pin	AS41122
36	Register Housing Base Plastic Register Housing Base Bronze	C5769 C5772
37	Register Housing Assy Plastic (Includes Part 34, 35, 36, 39 & 40) Register Housing Assy Bronze (Includes Part 34, 35, 36, 39 & 40)	B7856 B7857
38	Register	See Page 5.11-5.13
39	Register Retainer	C5770
40	Register Locking Pin Blue Register Locking Pin Bronze Color	A12558 A126581
41	Calibrator Housing Screws (4)	A13014
42	Calibrator Housing	C6523
43	Calibrator O-Ring	19210
44	Calibrator Gear Train	C6534XX
45	Calibrator Holding Ring	19106
46	Calibrator Housing Kit Includes Parts 8, 9, 10 & 12	B7860
47	Magnetic Train Cap	59059
48	Train Cap Bolt	90166 (6)
49	Train Cap Gasket	59046
50	Lower Drive Assembly	33170
51	LDA Retaining Ring	50139
52	Cap Adjusting Screw	45058
53	Cap Set Screw	99923
54	Torrent Cap Assembly	45054
55	Cap Assembly Screw	99984 (4)
56	Torrent Spindle Ball	45026
57	Torrent Spindle Head	45055
58	Torrent Thrust Washer	45032
59	Torrent Wheel with Bushing Torrent Wheel Only	45011 45012
60	Torrent Bushing Screw	99801 (4)
61	Torrent Spindle Bushing w/ screws	45030
62	Torrent Spindle	45067
63	Deflector	45003
64	Deflector Screw	99916 (8)
65	Torrent Spindle Check Nut	45056
66	Receptor	45002
67	Torrent Wheel Spindle Assembly	45093
68	Torrent Strainer	45004
69	Strainer Screw	99801 (8)

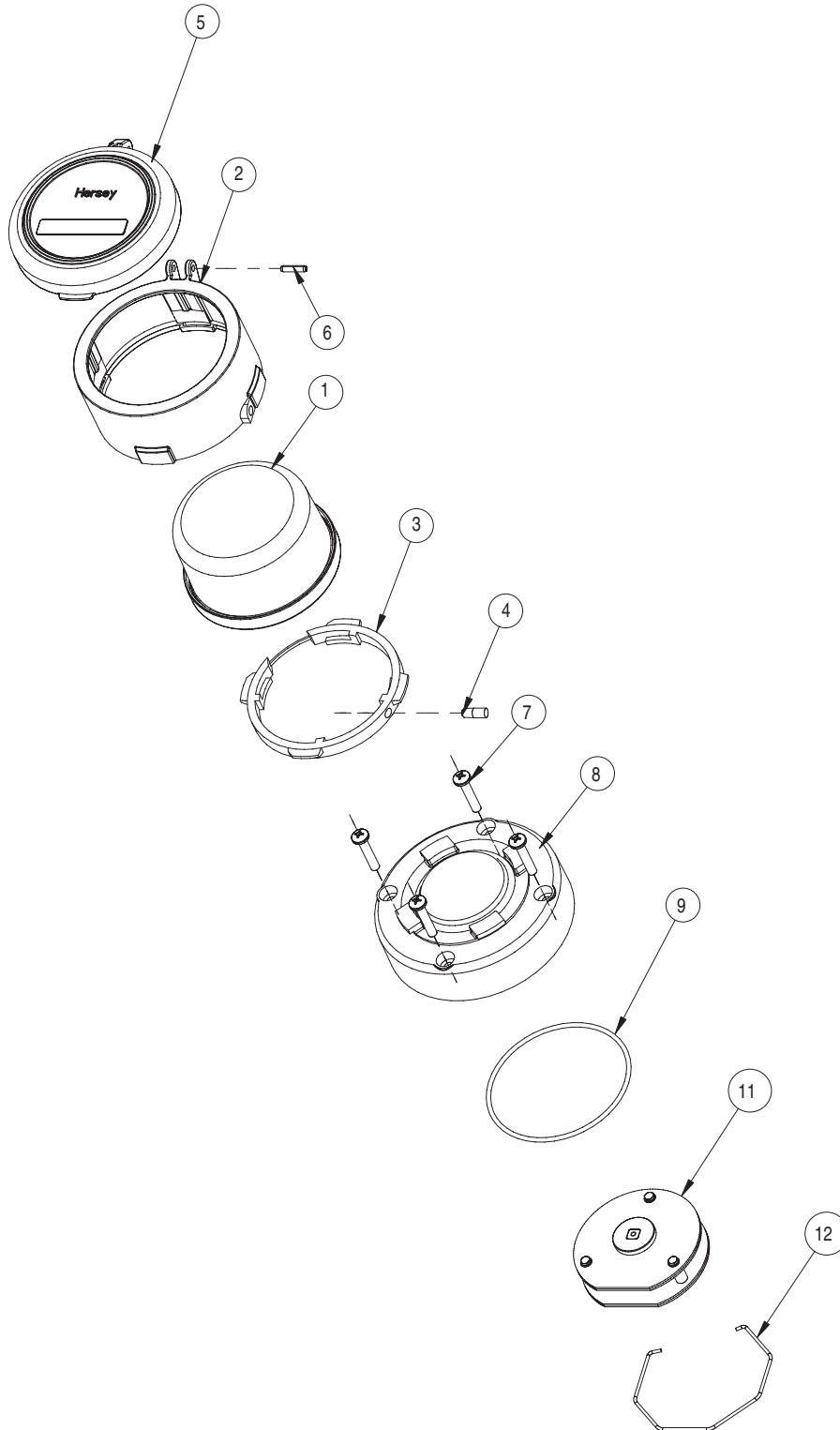
* Replaced by Nut with Nylon Insert.

Note: If more than one part is required per assembly, quantity is noted after part number (in parentheses).

Visual Register

Hersey® Meters

Visual Register Options for 2"-8" MCTII



Visual Register

Visual Register Options for 2"-8" MCTII

Ref	Description	2" MCTII Mainline	2" MCTII Bypass	3" MCTII Mainline	3" MCTII bypass	4" MCTII Mainline	4" MCTII Bypass
1	Visual Register Gallons Cubic Feet	D353216 D353316	D353212 D353312	D35329 D35339	D353213 D353313	D353219 D353319	D35322 D35332
2	Register Housing Base (Bronze)	C5772	C5772	C5772	C5772	C5772	C5772
2	Register Housing Base (Plastic)	C5769	C5769	C5769	C5769	C5769	C5769
3	Register Housing Insert	C5770	C5770	C5770	C5770	C5770	C5770
4	Register Locking Pin (Bronze Plastic)	A126581	A126581	A126581	A126581	A126581	A126581
4	Register Locking Pin (Blue Color Plastic)	A12558	A12558	A12558	A12558	A12558	A12558
5	Lid (Bronze)	C5774	C5774	C5774	C5774	C5774	C5774
5	Lid (Plastic)	C5768	C5768	C5768	C5768	C5768	C5768
6	Roll Pin	AS41122	AS41122	AS41122	AS41122	AS41122	AS41122
7	Calibrator Mounting Screws (4)	A13014	A13014	A13014	A13014	A13014	A13014
8	Calibrator Housing	C6523	C6523	C6523	C6523	C6523	C6523
9	Calibrator O-ring	19210	19210	19210	19210	19210	19210
10	Calibrator Holding Ring	19106	19106	19106	19106	19106	19106
11	Calibrator Gear Train	C6534XX***	C6534XX***	C6534XX***	C6534XX***	C6534XX***	C6534XX***
12	Calibrator Housing Kit (includes 7-10)	B7860	B7860	B7860	B7860	B7860	B7860

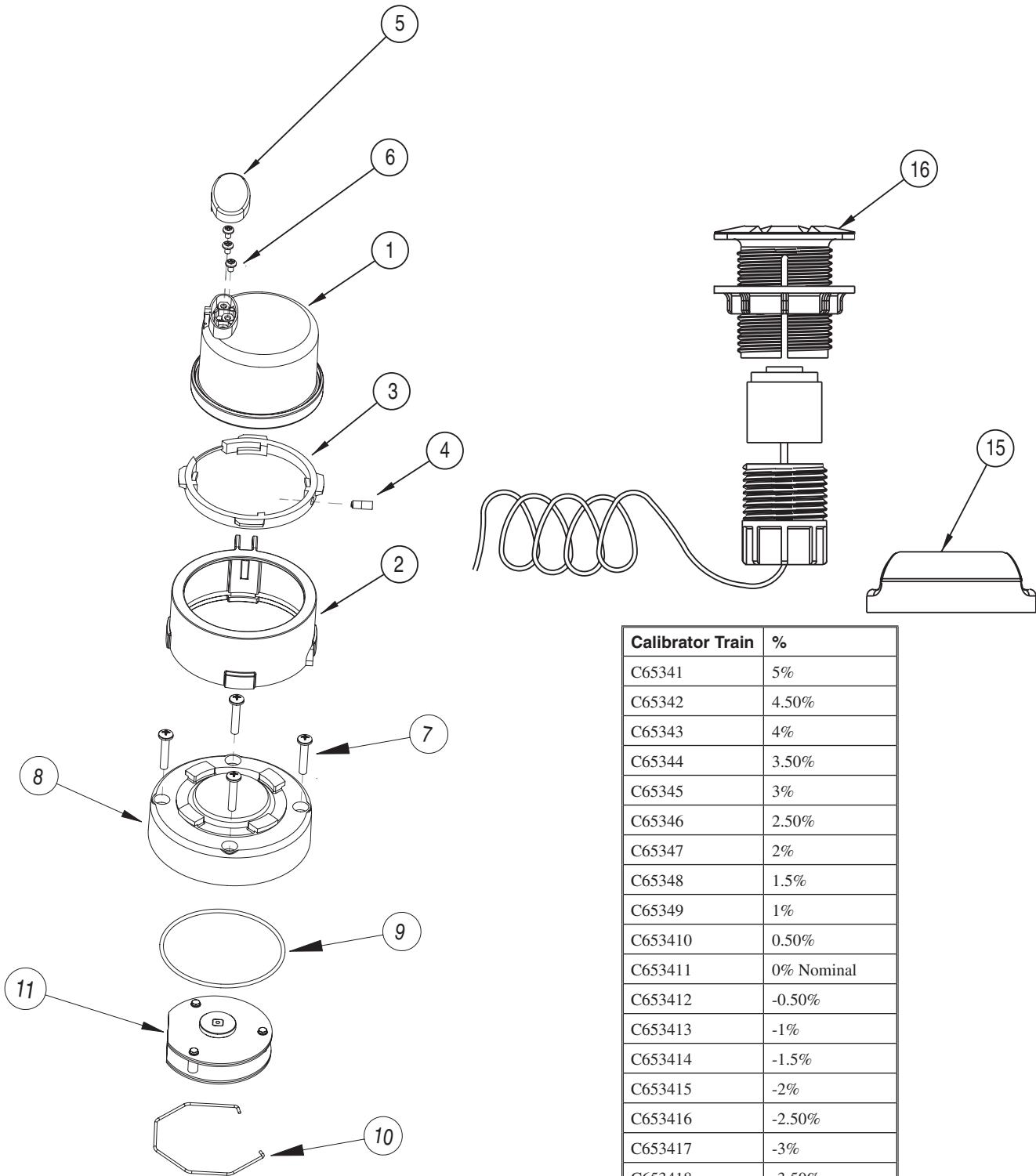
Ref	Description	6" MCTII Mainline	6" MCTII Bypass	8" MCTII Mainline	8" MCTII Bypass
1	Visual Register Gallons Cubic Feet	D35326 D35336	D353215 D353315	D35741 D35742	D358115 D358125
2	Register Housing Base (Bronze)	C5772	C5772	C5772	C5772
2	Register Housing Base (Plastic)	C5769	C5769	C5769	C5769
3	Register Housing Insert	C5770	C5770	C5770	C5770
4	Register Locking Pin (Bronze Plastic)	A126581	A126581	A126581	A126581
4	Register Locking Pin (Blue Color Plastic)	A12558	A12558	A12558	A12558
5	Lid (Bronze)	C5774	C5774	C5774	C5774
5	Lid (Plastic)	C5768	C5768	C5768	C5768
6	Roll Pin	AS41122	AS41122	AS41122	AS41122
7	Calibrator Mounting Screws (4)	A13014	A13014	A13014	A13014
8	Calibrator Housing	C6523	C6523	C6523	C6523
9	Calibrator O-ring	19210	19210	19210	19210
10	Calibrator Holding Ring	19106	19106	19106	19106
11	Calibrator Gear Train	C6534XX**	C6534XX**	C6534XX**	C6534XX**
12	Calibrator Housing Kit (includes 7-10)	B7860	B7860	B7860	B7860

**Call Hersey Customer Service for the appropriate Calibrator Gear Train.

Translator Encoder Register Options for 2" -8" MCTII

MCT II, MCT 8" and MFMI

Translator Encoder Register



Calibrator Train	%
C65341	5%
C65342	4.50%
C65343	4%
C65344	3.50%
C65345	3%
C65346	2.50%
C65347	2%
C65348	1.5%
C65349	1%
C653410	0.50%
C653411	0% Nominal
C653412	-0.50%
C653413	-1%
C653414	-1.5%
C653415	-2%
C653416	-2.50%
C653417	-3%
C653418	-3.50%
C653419	-4%
C653420	-4.50%
C653421	-5.0%

Translator Encoder Register and Calibrator

Ref	Description	2" MCTII Mainline	2" MCTII Bypass	3" MCTII Mainline	3" MCTII Bypass	4" MCTII Mainline	4" MCTII Bypass
1	Translator Register Gallons** Cubic Feet**	D353416xxx D353516xxx	D353412xxx D353512xxx	D353409xxx D353509xxx	D353413xxx D353513xxx	D353419xxx D353519xxx	D353402xxx D353502xxx
2	Register Housing Base (Plastic)	C5769	C5769	C5769	C5769	C5769	C5769
3	Register Housing Insert (Plastic)	C5770	C5770	C5770	C5770	C5770	C5770
4	Register Locking Pin (Bronze Plastic)	A126581	A126581	A126581	A126581	A126581	A126581
4	Register Locking Pin (Blue Color Plastic)	A12658	A12658	A12658	A12658	A12658	A12658
5	Lens Terminal Cover	B8447	B8447	B8447	B8447	B8447	B8447
6	Terminal Lug Screw	98197 (3)	98197 (3)	98197 (3)	98197 (3)	98197 (3)	98197 (3)
7	Calibrator Mounting Screws	A13014	A13014	A13014	A13014	A13014	A13014
8	Calibrator Housing	C6523	C6523	C6523	C6523	C6523	C6523
9	Calibrator O-ring	19210	19210	19210	19210	19210	19210
10	Calibrator Holding Ring	19106	19106	19106	19106	19106	19106
11	Calibrator Gear Train	C6534XX***	C6534XX***	C6534XX***	C6534XX***	C6534XX***	C6534XX***
12	Calibrator Housing Kit (includes 7-10)	B7860	B7860	B7860	B7860	B7860	B7860
13	TrueRead (not shown)	C6551	C6551	C6551	C6551	C6551	C6551
14	1,000' Spool of Wire	AS755	AS755	AS755	AS755	AS755	AS755
15	Wall Pad	T1234	T1234	T1234	T1234	T1234	T1234
16	Pit Pad with 3' of wire	T1235	T1235	T1235	T1235	T1235	T1235

Ref	Description	6" MCTII Mainline	6" MCTII Bypass	8" MCTII Mainline	8" MCTII Bypass
1	Translator Register Gallons** Cubic Feet**	D353406xxx D353506xxx	D353415xxx D353515xxx	D353420xxx D353520xxx	D35831xxx**** D35832xxx****
2	Register Housing Base (Plastic)	C5769	C5769	C5769	C5769
3	Register Housing Insert (Plastic)	C5770	C5770	C5770	C5770
4	Register Locking Pin (Bronze Plastic)	A126581	A126581	A126581	A126581
4	Register Locking Pin (Blue Color Plastic)	A12658	A12658	A12658	A12658
5	Lens Terminal Cover	B8447	B8447	B8447	B8447
6	Terminal Lug Screw	98197 (3)	98197 (3)	98197 (3)	98197 (3)
7	Calibrator Mounting Screws	A13014	A13014	A13014	A13014
8	Calibrator Housing	C6523	C6523	C6523	C6523
9	Calibrator O-ring	19210	19210	19210	19210
10	Calibrator Holding Ring	19106	19106	19106	19106
11	Calibrator Gear Train	C6534XX***	C6534XX***	C6534XX***	C6534XX***
12	Calibrator Housing Kit (includes 7-10)	B7860	B7860	B7860	B7860
13	TrueRead (not shown)	C6551	C6551	C6551	C6551
14	1,000' Spool of Wire	AS755	AS755	AS755	AS755
15	Wall Pad	T1234	T1234	T1234	T1234
16	Pit Pad with 3' of wire	T1235	T1235	T1235	T1235

**Call Hersey Customer Service for the appropriate Translator Register and AMR device part number.

***Call Hersey Customer Service for the appropriate Calibrator Gear Train.

Begins with 2004 meters, for retrofit meters call Hersey Customer Service.

Compound Magnetic Drive Meters
Sizes 2", 3", 4", 6" and 8"*

Hersey®-Meters

Model MCT II Parts