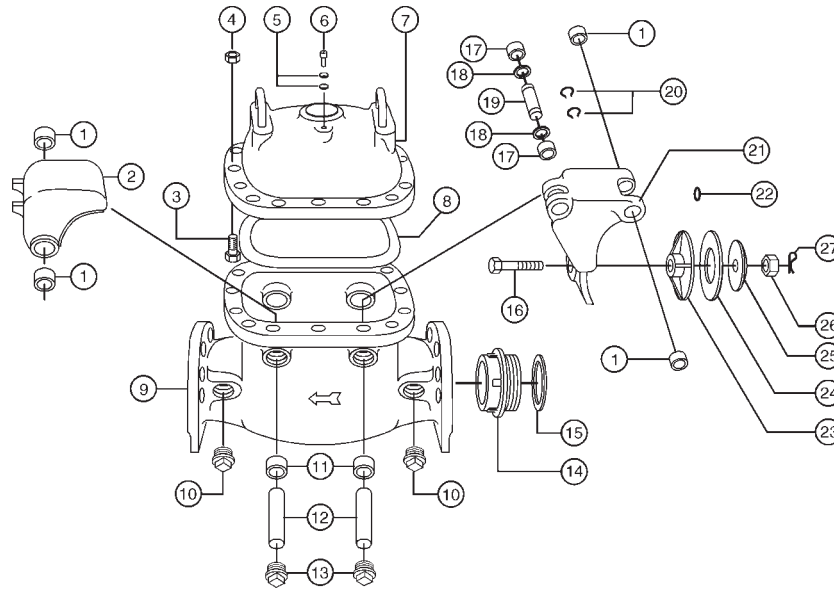


## Parts Less Bypass Meter



Ref. No.	Description	2" Model	3" Model	4" Model	6" Model	8" Model	10" & 12" Model
1	Weight and Swing Arm Bushing	53825 (2)	54325 (4)	55325 (4)	56325 (4)	57325 (4)	58325 (4)
2	Weight, full	53827	54327	55327	56327	57328	58328
3	Hex Bolt	90220 (10)	90130 (10)	90134 (12)	90135 (16)	90139 (22)	90342 (28)
4	Hex Nut	90122 (10)	90212 (10)	90251 (12)	90251(16)	90301 (22)	90301 (28)
5	Vent Screw Washer	59073 (2)	59073 (2)	59073 (2)	59073 (2)	59073 (2)	59073 (2)
6	Vent Screw	59003	59003	59003	59003	59003	59003
7	Cover *	N/A	N/A	N/A	N/A	N/A	N/A
8	Gasket	53906	54527	55727	56527	57427	58427
9	Bottom Case	N/A	N/A	N/A	N/A	N/A	N/A
10	Plug	59007(2)	59007 (4)	59012 (4)	59013 (4)	59014 (4)	59014 (4)
11	Bushing	53807 (4)	54507 (4)	55707 (4)	56507 (4)	57307 (4)	58307 (4)
12	Pin	53879 (2)	54430 (2)	55379 (2)	56379 (2)	57379 (2)	58379 (2)
13	Pin Plug	59005 (4)	59011 (4)	59006 (4)	59007 (4)	59008 (4)	59009 (4)
14	Seat Unthreaded	N/A	N/A	N/A	N/A	N/A	N/A
15	Seat Gasket for Threaded Seat	N/A	N/A	N/A	N/A	N/A	N/A
16	Clapper Bolt	53878	54318	55318	56318	57318	58318
17	Swing Arm Bushing	53837 (2)	54337 (2)	55362 (2)	56362 (2)	57362 (2)	58362 (2)
18	Swing Arm Washer	53823 (2)	54323 (2)	55323 (2)	56323 (2)	57323 (2)	58323 (2)
19	Swing Arm Roller Pin	53839	54338	55345	56384	57384	58384
20	Pin Clips	53874 (2)	54351 (2)	55698 (2)	55326 (2)	57498 (2)	58383 (2)
21	Swing Arm	53838	54313	55313	56313	57313	58313
22	Clapper O-ring	53893	54396	55396	56396	57396	58396
23	Clapper	53815	54365	55365	56315	57315	58315
24	Clapper Rubber	53816	54366	55366	56316	57316	58316
25	Clapper Disc	53817	54367	55367	56317	57317	5831726
27	Clapper Nut ** Clapper Cotter Pin **	59145	59146	59147	59148	59149	59150

\*\* Replaced by nut with nylon insert.

Note: If more than one part is required per assembly, quantity is noted after part number (in parenthesis).